



# Martini dECO FABRIC

---

Captivate Data Sheet

---

A large, light blue, stylized lowercase letter 'm' graphic that spans the bottom half of the page.

CSR

## Captivate

Our dECO Fabric Captivate range offers bold modern colours with a palette of neutrals. The soft, plush feel of Captivate adds an opulent surface texture to any interior. Captivate is inherently durable, does not fray and is Velcro® receptive, offering unlimited styling possibilities.

## Applications

Multi-purpose interior fit out fabric. Designed for use on dECO absorptive acoustic panels and screens for use in office, commercial and residential interiors.

## Environmental Benefits and Credentials

Manufactured from thermally bonded polyester fibre with up to 80% recycled fibre content from post-consumer PET packaging such as empty drink bottles.

- GreenTag<sup>Cert™</sup> certified
- Environmental Product Declaration (EPD) Certified in accordance with ISO 14025
- Product Health Declaration (PHD) certified
- Declare certified
- Suitable for Green Star™ projects
- No red list chemicals are present
- No ozone-depleting gases are used during the manufacturing process
- Volatile organic compounds (VOCs) generated in the manufacturing process is classified as low (0.01 mg/m<sup>3</sup>)s
- Safe, non-irritant, non-toxic, and non-allergenic
- Products are 100% recyclable
- High reuse potential



Martini's Product Stewardship Program can be viewed at [www.csrmartini.com.au](http://www.csrmartini.com.au)

## Fabric Care

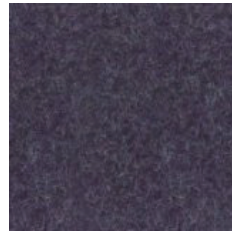
Vacuum regularly using an upholstery attachment on low suction. Do not use a vacuum attachment with a rotary brush. Brushing may damage the nap or character of the fabric. Treat spills and stains as soon as possible by using a damp cloth. Dry cleaning fluid can also be used. Do not rub or use an excessive amount of water. Blot the excess moisture with a dry clean cloth.



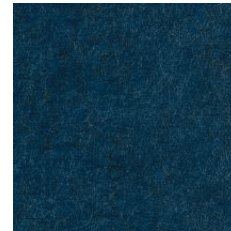
Nordic Sky



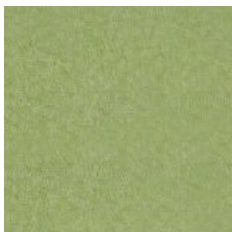
Nashi Pear



Eggplant



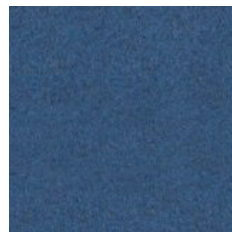
Summit



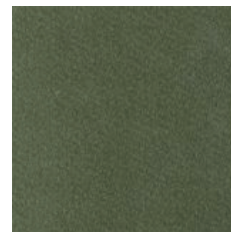
Apple



Ice



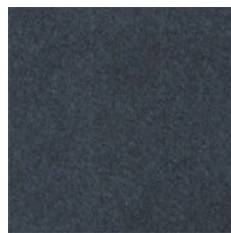
Ocean



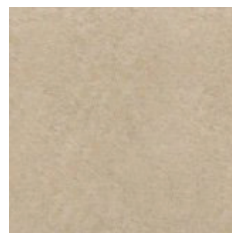
Moss



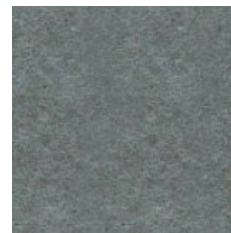
Granite



Sapphire



Wheat



Platinum



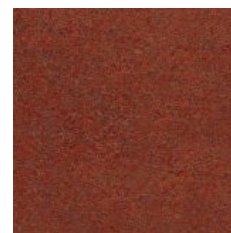
Linen



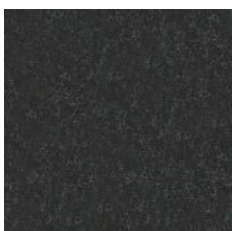
Citrus



Ash



Rosso



Midnight



## Physical description and properties

<b>Thickness/width:</b>	3–4mm/1350mm
<b>Melting point:</b>	255°C
<b>Flash point:</b>	More than 420°C
<b>Other properties:</b>	Non-allergenic, low irritant, low flame response, resilient
<b>Ingredients:</b>	Organic, long chain synthetic polymer
<b>Max service temp:</b>	110°C
<b>Alkalinity:</b>	pH 7.8 (pH 7 is neutral)
<b>Moisture absorption:</b>	Exposure to an atmosphere of 50°C and 95% RH for four days gives moisture absorption of less than 0.2% by volume

**Fire resistance:** Tested to AS ISO 9705 Corner Burn in accordance with AS 5637.1

**Group 1**  
SMOGRA not more than 100m<sup>2</sup>/s<sup>2</sup> x 1000

Ignitability	0
Spread of Flame	0
Heat Evolved	0
Smoke Developed	0-1

# csrmartini.com.au

---

CSR Martini Pty Limited  
P.O. Box 560, Ingleburn NSW 1890  
martinienquiries@csr.com.au  
1300 767 776

---

04/19



Disclaimer: The contents of this brochure are copyright protected and may not be reproduced in any form without prior written consent of CSR Martini. Recommendations and advice regarding the use of the products described in this brochure are to be taken as a guide only, and are given without liability on the part of the company or its employees. We reserve the right to change product specifications without prior notification, please refer to the CSR Martini website for the latest version of this document. The purchaser should independently determine the suitability of the product for the intended use and application.